

OVERVIEW OF SIMPLE RISK ASSESSMENT AND CONTROL FOR CHEMICALS (SiRAC)

26th September 2019



HAZLINAYON
Bahagian Pengurusan Kimia
Jabatan Keselamatan dan Kesihatan
Pekerjaan

SCOPE

- Legal Requirements
- Types of Assessments
- Types of chemicals not covered
- Who to conduct SiRAC?
- SiRAC Methodology
- Concept of SiRAC
- Steps of SiRAC
- Conclusion

A decorative graphic on the left side of the slide consisting of two parallel, wavy lines. The outer line is a vibrant yellow, and the inner line is white. They start from the top left and curve downwards towards the bottom left, creating a dynamic, organic shape.

LEGAL REQUIREMENTS

USECHH REGULATIONS 2000 OR AS AMENDED

- “An employer shall not carry out any work which may expose or is likely to expose any employee or any other person to any **chemical hazardous to health** unless he has made a written assessment of the risks created by the chemical to their health.”

CHEMICALS HAZARDOUS TO HEALTH: DEFINITION

Chemical hazardous to health means any substances or mixtures which -

- Listed in Schedule I and II of the USECHH Regulations 2000;
- Classified in any hazard class specified under **health hazard of the First Schedule of CLASS Regulations 2013** or as amended;
- Pesticides as defined under Pesticides Act 1974 or amended; or
- Scheduled wastes listed in the First Schedule to the Environmental Quality (Scheduled Waste) **Regulations 2005** or as amended

REGULATIONS 11, USECHH 2000

- “The employer shall ensure that any assessment carried out by an assessor”
- Proposed draft:
- New term: Chemical risk assessor

A decorative wavy line in orange and white runs vertically along the left side of the slide.

TYPES OF ASSESSMENT

TYPES OF ASSESSMENTS

- Full Assessment
 - Chemical Health Risk Assessment (CHRA)
 - Generic Assessment (GCHRA)
- Simple Assessment
 - Simple Risk Assessment and Control (SiRAC)

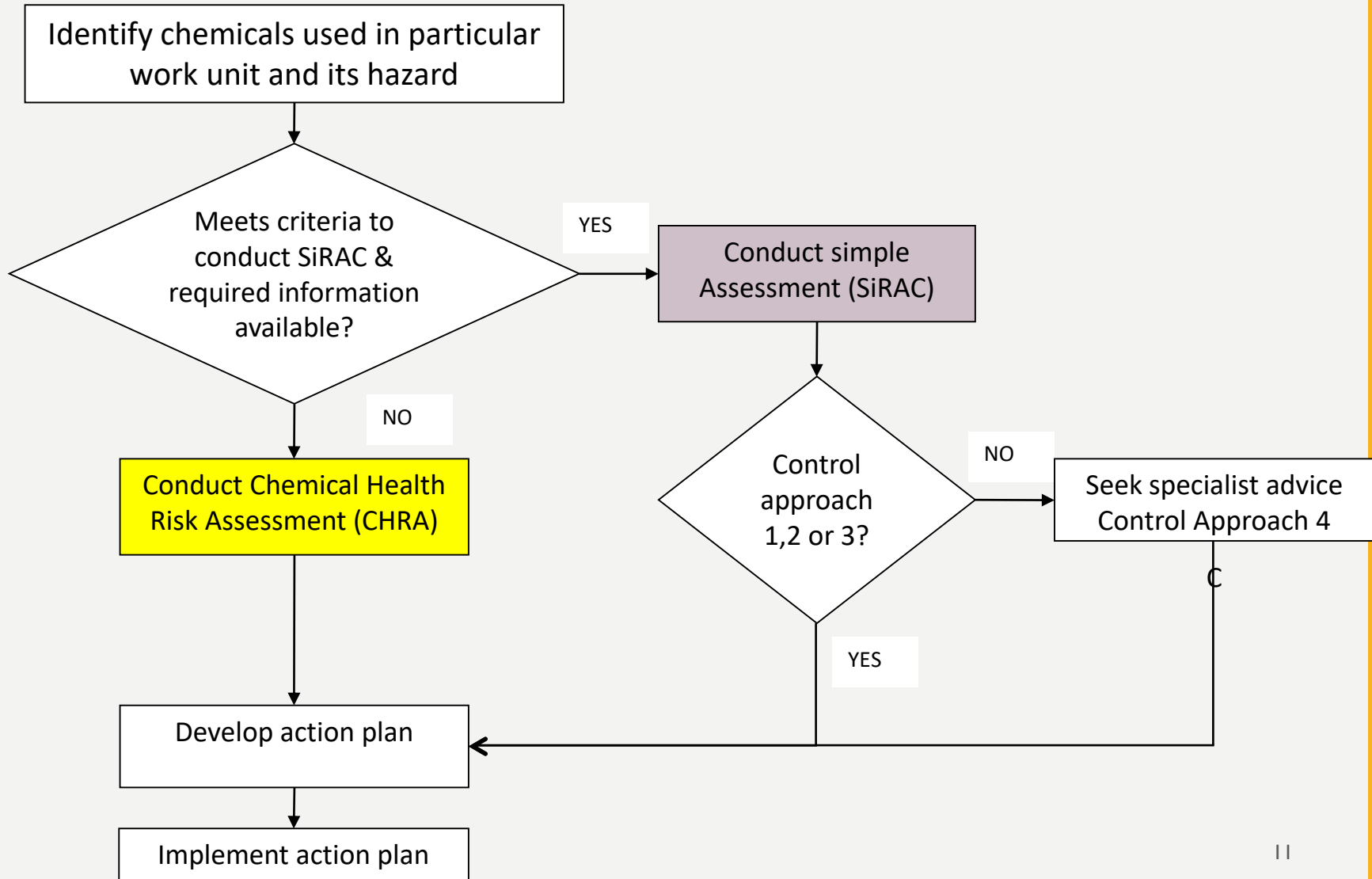
TYPES OF CHEMICALS NOT COVERED BY SIRAC:

- (a) Chemical classified as carcinogenicity category I, mutagenicity category I or respiratory sensitization category I under CLASS Regulations 2013
- (b) Process generated dusts and fumes (e.g. wood dusts, fume released from molten metal);
- (c) Organic dust, e.g. grain dust, cotton dust and paddy husk dust;

TYPES OF CHEMICALS NOT COVERED BY SIRAC:

- (d) Gases, e.g. hydrogen sulphide, ammonia, etc.; and
- (e) Scheduled wastes as listed in the First Schedule under the Environmental Quality (Scheduled Wastes) Regulations 2005 or as amended.

SELECTION OF ASSESSMENT : CHRA OR SiRAC



ASSESSMENT STRATEGY

Full Assessment

- ❖ First approach
- ❖ To be done for each and every workplace where chemicals hazardous to health are used

Simple Assessment

- ❖ A simplified methodology to be used by trained person to assess risk for certain situations not requiring specialized knowledge
- ❖ Process of grouping workplace risks into control bands based on combination of hazard and exposure information



WHO TO CONDUCT SIRAC?



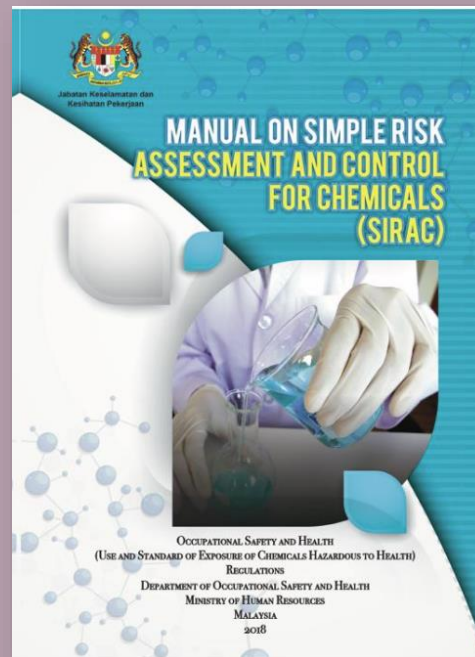
WHO TO CONDUCT SIRAC?

- Under proposed draft USECHH Regulation 20XX an employer may appoint a **trained person** to carry out a simple assessment (SiRAC).
- The necessary knowledge, experience and skills for the **trained person** can be extracted from the manual (Para 1.5)
- SiRAC may be done by existing assessors.

PERSON TO CONDUCT SIRAC

1. Knowledge, training and expertise in understanding hazard and risk;
2. Ability and authority to collate all necessary and relevant information;
3. Knowledge, skills and experience to make the right decisions about risks and the necessary precautions;
4. Knowledge on the SiRAC manual;
5. How the work activity uses chemicals hazardous to health;
6. How to interpret SDS; and
7. Know basic requirements of OSHA, USECHH, relevant guidelines
8. Undergone SiRAC training programme by approved training providers. (optional for CHRA assessors)

SIRAC METHODOLOGY



SIRAC METHODOLOGY

- SiRAC is based on the control banding approach
- Other control banding approaches:
 - COSHH Essentials (HSE of United Kingdom)
 - ILO Control Toolkit (ILO)
 - KOSHA Toolkits (Korea)
 - Stoffenmanager (Dutch)

CONTROL BANDING



- ✓ **Use readily information available to users**
from chemical suppliers taking the users through a series of simple steps allowing them to choose practical control solutions that should reduce exposures to levels which present no danger to health.
- ✓ **Not possible to assign OEL for each chemical in use**
a chemical is assigned to a 'band' for control measures, based on its hazard classification according to international criteria, the amount of chemical in use, and its volatility/dustiness.
- ✓ **Outcome**
one of four recommended control strategies.



CONCEPT OF SIRAC

WHAT ?

***RISK,
HAZARD
AND
EXPOSURE***

CHEMICAL RISKS?



- ⊙ Probability of harm, injury, illness or disease from overexposure to chemicals

⊙ **Risk = Hazard x Exposure**

- ⊙ Hazard is determined from **chemical classification** (H-code/Risk phrase)
- ⊙ Exposure is determined by the **quantity of chemical used** and its **ability to become airborne**
- ⊙ Routes of exposure considered in SiRAC is
 - ⊙ **inhalation, dermal contact and absorption**
 - ⊙ **Ingestion and injection NOT considered in SiRAC**

H-CODE

H-code or the **hazard statement code** describes the nature of the hazards of the chemicals as specified in First Schedule of the CLASS Regulations

Grouping of chemicals in the hazard group are based on its health effect and hazard classification

It is assigned to each of the hazard statement

used for reference purposes

not part of the hazard statement text and shall not be used to replace it.

Examples of H-code:

H331: Toxic if inhaled

H335: May cause respiratory irritation

H310: Fatal in contact with skin

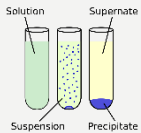
H317: May cause an allergic skin reaction

HAZARDS GROUPED INTO FOUR: BASED ON RISK PHRASES/ H-CODE



GROUP A

LEAST
HAZARDOUS



GROUP B

MODERATELY
TOXIC



GROUP S

HARM IN CONTACT
WITH SKIN & EYES



GROUP C

TOXIC CHEMICALS



GROUP D

MOST
HAZARDOUS
CHEMICALS

HAZARD DETERMINATION

Chemicals
causing harm
when airborne

+

Chemicals capable
of causing harm if in
contact with
skin *or* eyes

Group A
Group B
Group C
Group D



Group S

EXPOSURE DETERMINATION

**Magnitude of
Exposure**

+

**Frequency &
Duration**

Scale of Use
&
Ability to Become
Airborne



Per Operation/Batch
Or
Per Day

Total Duration >
15 minutes per day

EXPOSURE DETERMINATION

1. Scale of use

- ★ Determine the way chemical is handled and how much employees are exposed
- ★ Amount used per batch/operation or per day (continuous operation) can be described as

SMALL, MEDIUM, LARGE

Quantity	Solid		Liquid	
	Weight	Typically received in	Volume	Typically received in
Small	Grams	Packets or bottles	Millilitres	Bottles
Medium	Kilograms	Kegs or drums	Litres	Drums
Large	Tonnes	Bulk	Cubic metres	Bulk

EXPOSURE DETERMINATION

2. Ability to become airborne

Physical form of the chemical affects how likely it is to get into the air.

- For solids - determined by its *dustiness*
 - Depends on its physical form-the finer the solid the more likely for it to become airborne
- For liquids-determined by its *volatility*
 - Volatility depends on its *vapour pressure* - the higher the vapour pressure, the more volatile the chemical
 - Volatility also depends on the *operating temperature* - the higher the operating temperature, the more easily vapour will be formed and become airborne

VAPOUR PRESSURE

Pressure exerted by a vapour.

- Describes tendency of a chemical to form vapour
- Useful (with evaporation rate) in estimating how quickly a substance becomes airborne within the workplace (estimation of the inhalation or fire hazards)
- High vapour pressure => volatile(easily vapourised)

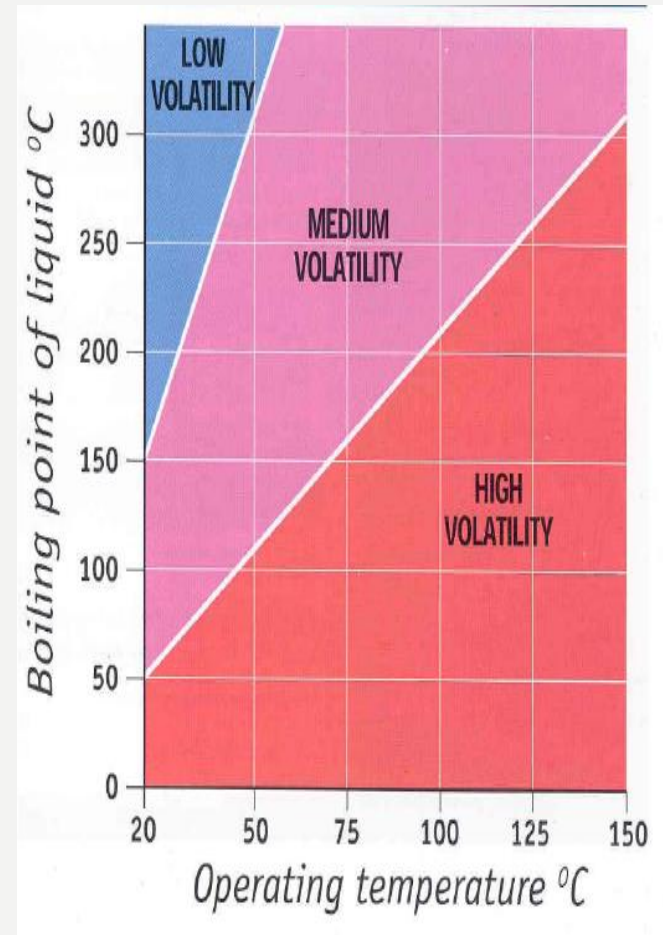
<i>Volatility band</i>	<i>Vapour pressure</i>
<i>Low</i>	<i>Less than 500 Pa</i>
<i>Medium</i>	<i>500 to 25 000 Pa</i>
<i>High</i>	<i>More than 25 000 Pa</i>

BOILING POINT

- Temperature at which vapour pressure of liquid equals total pressure
- Temperature at which a liquid changes into its' gaseous form
 - ***e.g. 100°C for water***
- Material with high boiling point *usually* have a lower vapour pressure - hence safer
 - ***Exceptions such as Sarin which has very high boiling point but release toxic vapours at room temperature***
- High vapour pressure → low boiling point

OPERATING TEMPERATURE

- The degree of volatility for liquids are based on tasks carried out at room temperature of 25°C
- For task carried out above room temperature, the degree of volatility is determined based on the chemical's *process/operating temperature*
- The lower the boiling point and the higher the operating temperature, the higher is the degree of volatility



CONTROL APPROACH TO REDUCE EXPOSURE

TRADITIONAL

Elimination
Substitution
Modification

Containment

Ventilation

Work Practices

Personal Protective
Equipment



CONTROL BANDING

Special-
Expert Advice

Containment

Engineering Control

General Ventilation

PPE for
Respiratory, Skin &
Eyes protections



CONTROL APPROACH

The risk controls are divided into 4 bands or approaches:

CA 1

- General ventilation : LOW RISK

CA 2

- Engineering control: MODERATE RISK

CA 3

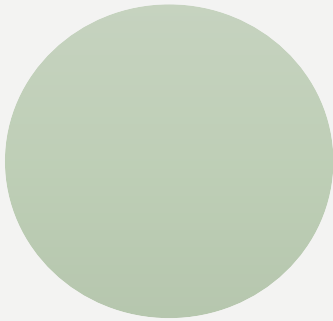
- Containment : HIGH RISK

CA 4

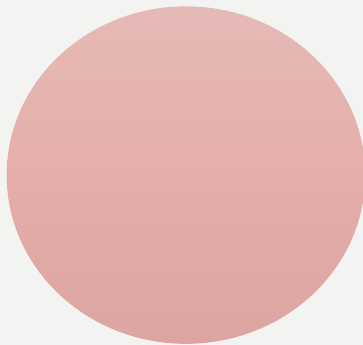
- Special : HIGH RISK

CONTROL APPROACH 1

CA 1



For *low risks* CAI will be recommended



Give the *least reduction* in exposure; consists of general ventilation and good work practices

CONTROL APPROACH 2

CA 2

For *moderate risks* CA2 will be recommended

CA2 will give *moderate reduction* in exposure and consists of using local exhaust ventilation and other engineering methods of control but not complete containment

CONTROL APPROACH 3

CA 3

For *high risks*

Give *greatest reduction* in exposure where the hazard is contained or enclosed.

Use for *highly toxic chemicals* or moderately toxic chemicals at *high airborne concentrations*

CONTROL APPROACH 4

CA 4

For control of high risks, where very *toxic* chemicals and the airborne concentration is very high

Need to seek *specialist advice* in selecting appropriate control measures

e.g. Occupational Hygienist, Chemical Risk Assessor, engineer in the design and installation of engineering control equipment.

CONTROL APPROACH ADJUSTMENTS

CA is adjusted for a very short total duration of exposure:

1. Adjustment for Frequency & Duration

- *For very short exposure duration (less than 15 minutes per day) CA drop by 1 level except if CA is 4.*

WHAT IS CONTROL GUIDANCE SHEET (CGS)?

- ❖ FACT SHEET PROVIDING GUIDANCE TO EMPLOYER ON HOW TO CONTROL EXPOSURE TO CHEMICALS FOR EACH CONTROL APPROACH
- ❖ CGS DIVIDED INTO TWO:
 - ❖ SPECIFIC CGS
 - ❖ GENERIC CGS
- ❖ SPECIFIC CGS :A STRAIGHT FORWARD ADVICE FOR 3 ACTIVITIES
- ❖ GENERIC CGS:APPLICABLE TO ALL ACTIVITIES NOT COVERED UNDER SPECIFIC CGS

SPECIFIC CONTROL GUIDANCE SHEETS

Specific CGS (based on task
performed)
for work activities or industries

- **PEST CONTROL (7 TASKS)**

CGS P001 - P007

01

- **CLEANING SERVICES**

CGS C001 - C006

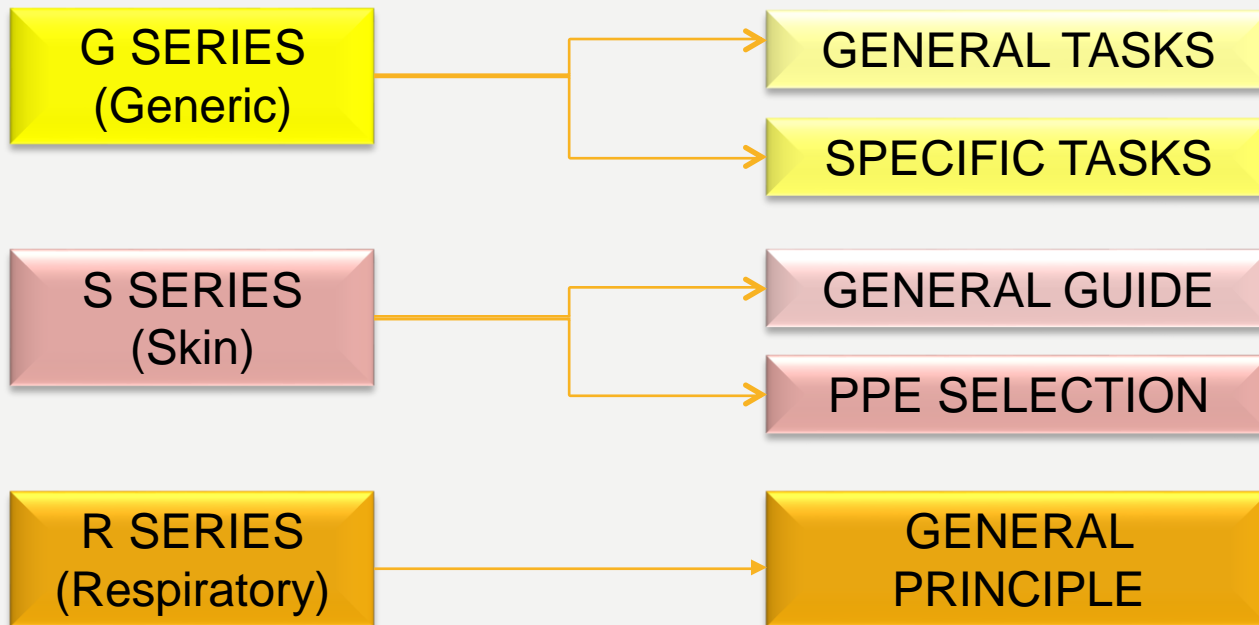
02

03

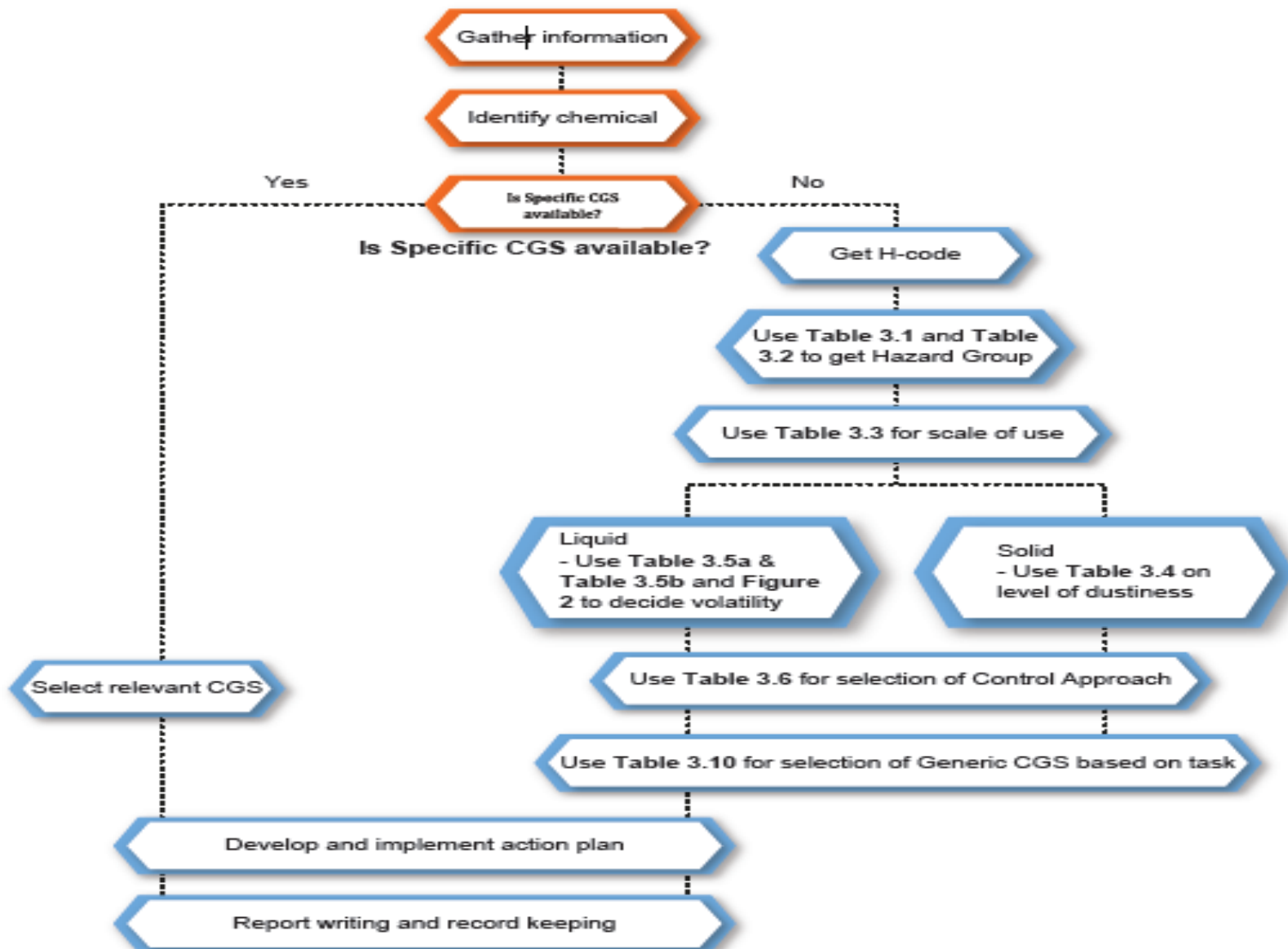
- **LITHOGRAPHY PRINTING**

LP001 - LP006

Generic Control Guidance Sheets



STEPS TO CONDUCT SIRAC



CONCLUSION

- SiRAC IS ANOTHER METHOD OF RISK ASSESSMENT FOR CHEMICALS
- CERTAIN CHEMICALS CANNOT BE ASSESSED USING SIRAC
- ONLY ROE THROUGH INHALATION AND DERMAL IS COVERED
- CONTROL BANDING APPROACHES, FOUR APPROACHES CA1-CA4
- SiRAC CAN BE CONDUCTED BY ASSESSOR AND LATER TRAINED PERSON



Thank You

hazlina@mohr.gov.my