



# CONTRACTOR MANAGEMENT - OUR EXPERIENCE

*By: Rozaimy Bin Amiruddin  
IJM Corporation Berhad*



# Contents

1

**Overview of IJM**

2

**IJM Charter**

3

**HSE in IJM**

4

**Process**

5

**HSE Initiatives**



### IJM Corporation Berhad



**Construction**



**Infrastructure**

- Ports
- Highways



**Properties**



**Industries**



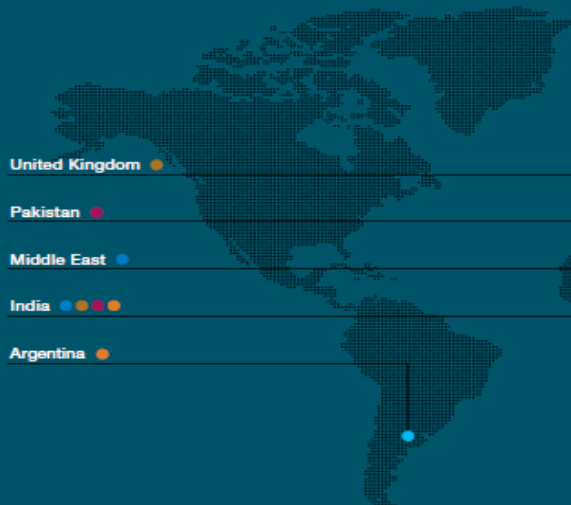
**Plantations**



# Overview of IJM

## Corporate Profile

**GROUP MARKET  
CAPITALISATION**  
**RM9.83 billion**  
as at 30 June 2014



**GROUP TOTAL  
ASSETS**  
**RM18.40 billion**  
as at 31 March 2014

IJM is a leading Malaysian conglomerate and is listed on the Main Market of Bursa Malaysia Securities Berhad. Its core business activities encompass construction, property development, manufacturing and quarrying, infrastructure concessions and plantations.

Headquartered in Selangor, Malaysia, IJM's international aspirations have seen it establish its presence in 10 countries, with primary focus in Malaysia, India, China and Indonesia.

### Group Revenue By Division

31%

CONSTRUCTION

33%

PROPERTY

13%

INDUSTRY

10%

PLANTATION

13%

INFRASTRUCTURE

**PROFIT  
BEFORE TAX**  
**RM1,416.31 million**  
for the financial year ended 31 March 2014





# IJM CHARTER

Our Business Policy and Conduct continues to be guided by a strong Commitment towards...

- Quality Products & Services
- Employee Welfare
- Maximising Stakeholder Returns
- Trusted Client Relationships
- Social Responsibility
- Ethical Conduct
- Safety, Health & Environment
- Good Corporate Governance

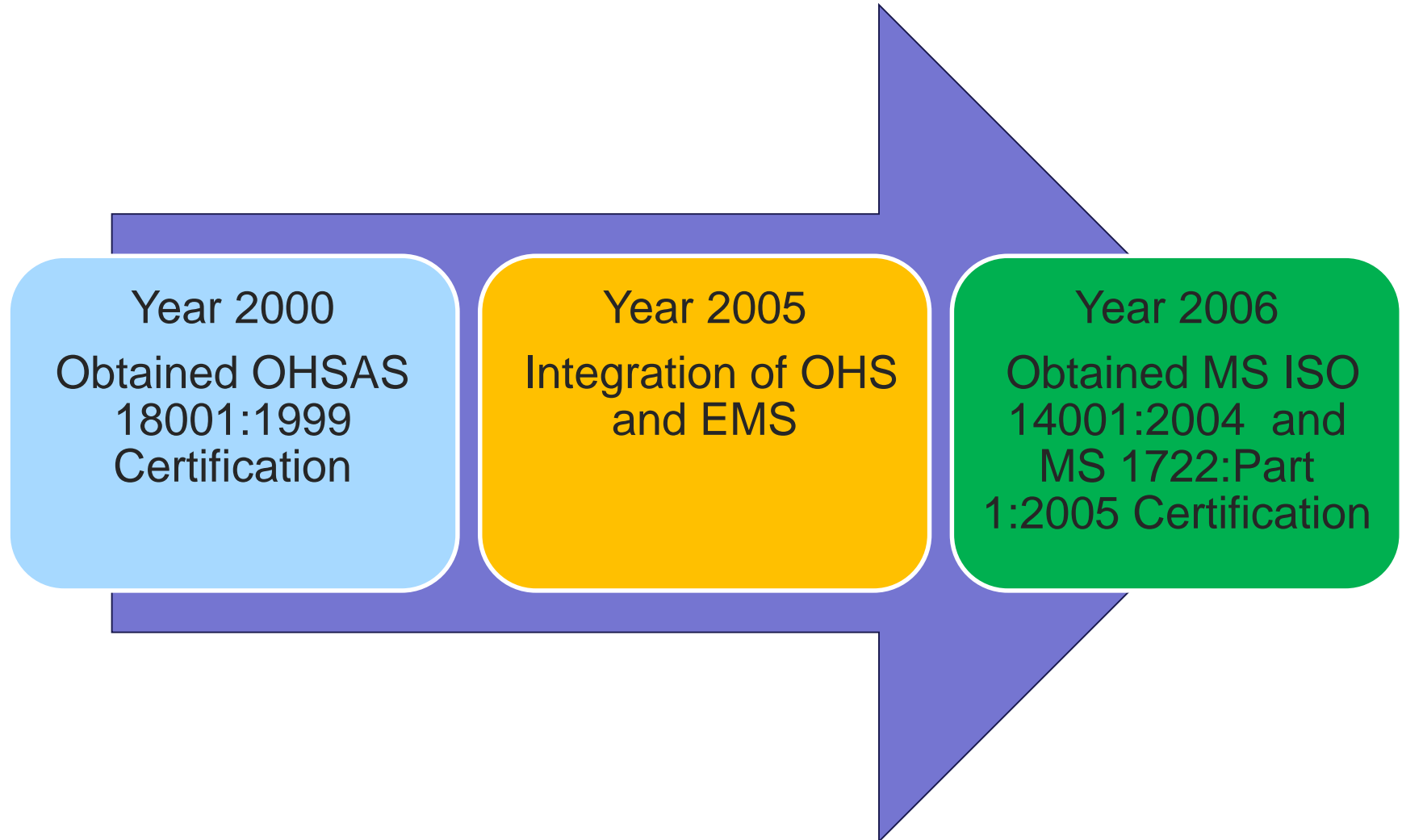
# OUR VISION

Our corporate vision is to become a leading Malaysian conglomerate in the markets we serve.

# OUR MISSION

Our mission is to deliver sustainable value to our stakeholders and enrich lives with the IJM Mark of Excellence.







1995 –  
Establishment  
of the Safety  
and Health  
Dept. under  
IJMC.

2000 – OHSMS  
and OHS  
Management  
Committee

2004 –  
Functions under  
IJM Corporation  
Berhad.

2006 – EMS  
establishment

2007  
REBRANDING  
to HSE  
Department



## IJM Construction Sdn Bhd

Grand Hyatt, Kuala Lumpur, Malaysia



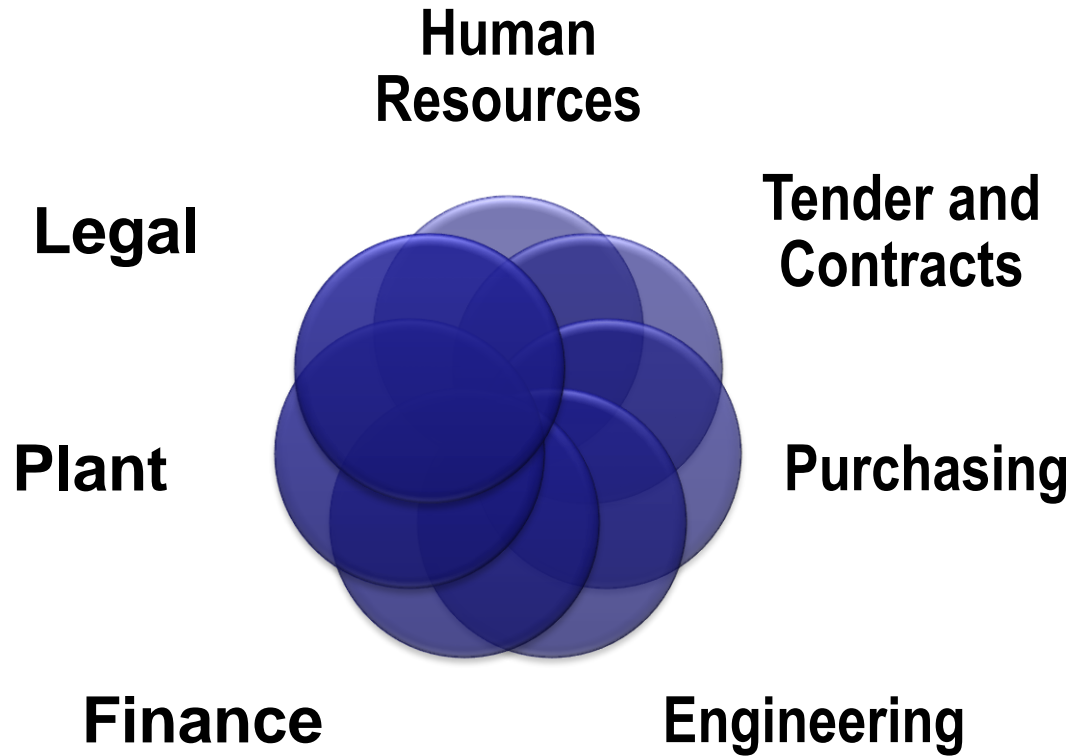
Petronas Twin Towers, Kuala Lumpur, Malaysia







### Construction Div. Support Services





Pre construction



Construction Stage



Post Construction

## Issues, some of them:-

- Inadequate identification of HSE needs
- Inadequate communication of requirements between departments and contractors
- Inadequate monitoring of activities
- Inadequate behavior reinforcement and correction initiatives
- Inadequate evaluation of performance

## Pre – Construction

- Identify HSE needs
  - Any special requirements?
  - Standard requirements?
- Tender documents
  - List of HSE provisions
  - HSE responsibility matrix
  - Sub Contract Agreement
- Selection of Contractor
  - Registered subcontractors
- Tender interview
  - HSE requirements



### Construction Stage

- Kick Off Meeting
  - HSE requirements and implementation
  - Submission and approval
- Risk Management
  - HIRADC and EAI
- Training
  - On Job Training
  - Specific training
- Monitoring and measurement
- CAPA





### Post Construction Stage

- Contractor Performance Evaluation
  - Evaluate the actual performance against criteria
- Maintain/Blacklist
  - Decide whether to maintain or blacklist subcontractor

