

# NIOSH TRAINING PROGRAM

A stylized, low-poly globe in shades of green, yellow, and orange, positioned behind the training categories. The globe is partially obscured by the orange boxes and the text.

## TRAINERS

- Confined Space Trainer
- Safety Induction for Construction Workers Trainer
- Basic Train the Trainer


## PRACTITIONERS

- Safety and Health Officer
- Site Safety Supervisor
- Safety and Health Committee

## EMPLOYEES

- OSH for Construction Personnel
- Working Safely at Height
- Confined Space Entry
- Basic Rigging and Slings

# PROTECTING WORKERS EXPOSED TO RESPIRABLE CRYSTALLINE SILICA

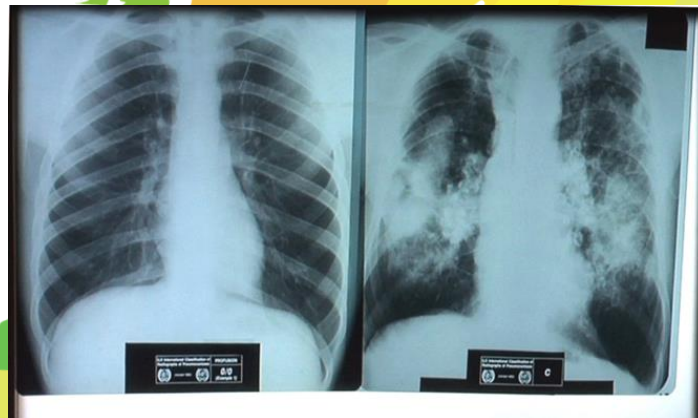
- 
- Silica can be found everywhere ...
    - substantial quantities in natural materials such as sand, sandstone, granite, stone & rock (aggregates), and in clay, shale, slate
    - Found in building materials such as concrete, brick and tile
  - Some of the construction activities that may exposed to respirable crystalline silica:
    - \* Cutting, coring, drilling, grinding of concrete and masonry
    - \* Chipping, drilling, crushing or hauling rock...
    - \* Abrasive blasting of concrete or masonry surfaces
    - \* Demolishing concrete and masonry structures
    - \* Dry-sweeping or blowing concrete or masonry dusts

# PROTECTING WORKERS EXPOSED TO RESPIRABLE CRYSTALLINE SILICA

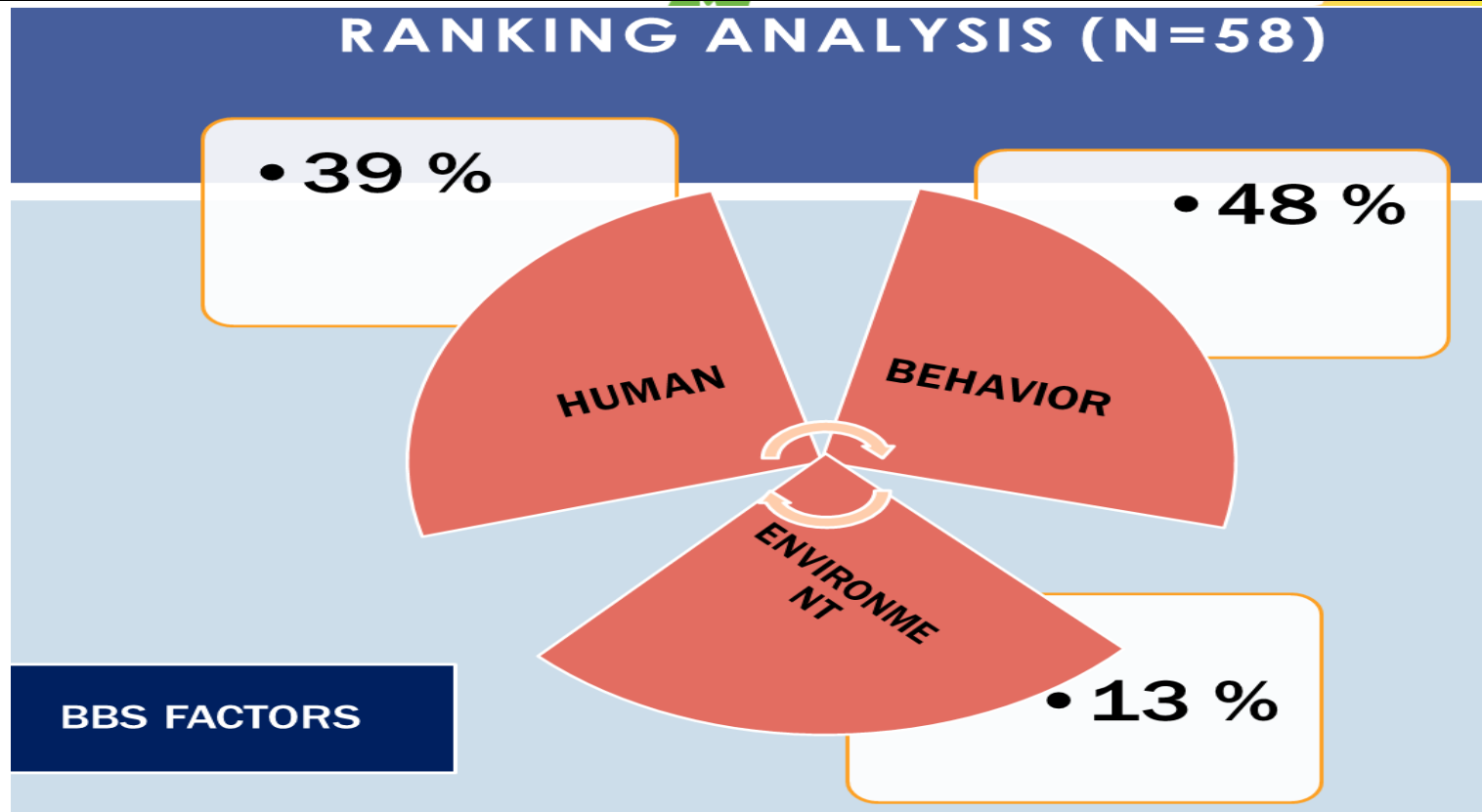
Exposure to respirable crystalline silica has been linked to:

- ❖ Silicosis;
- ❖ Lung cancer;
- ❖ Chronic obstructive pulmonary disease

Health assessment may includes medical and work history, physical exam, chest X-ray, and Lung function test



# A STUDY ON BEHAVIORAL BASED SAFETY REDUCES ACCIDENT IN CONSTRUCTION SECTOR



- **Identify BBS factors** that contribute to accidents in construction sites.
- **Indicate which BBS factor contribute most** to accidents in the construction sites.





A member of UEM Group

# Whole Body Vibration Exposure of Off Road Lorry Driver

By:

Raemy Md Zein <sup>(1)</sup>, T.Hari Krishnan <sup>(1)</sup> Prof Hj Mohd Imran Ghazali <sup>(2)</sup> Dr Musli Nizam Bin Yahya <sup>(2)</sup>, Md Nor Azali bin Azmir <sup>(2)</sup> Mohd Azlis Sani Bin Md Jalil <sup>(2)</sup>, Zainorin bin Kasron <sup>(2)</sup> Noorul Azreen Azis <sup>(1)</sup>

<sup>(1)</sup> Ergonomics Excellence Centre, SRO Johor, NIOSH

<sup>(2)</sup> Faculty of Mechanical & Manufacturing Engineering, UTHM

